

53/150

THE WELLINGTON PLACE OF WELLINGTON P.U.D.

BEING A PART OF AN ABANDONED PORTION OF GREENVIEW SHORES NO. 2 OF WELLINGTON - P.U.D.
(ABANDONED BY PALM BEACH COUNTY BOARD OF COUNTY COMMISSIONERS RESOLUTION NO. R-80-774,
RECORDED IN OFFICIAL RECORDED BOOK 3323, PAGES 0811 THRU 0813 OF THE PUBLIC RECORDS
OF PALM BEACH COUNTY, FLORIDA) AS RECORDED IN PLAT BOOK 31, PAGES 120 THRU 136 OF THE
PUBLIC RECORDS OF PALM BEACH COUNTY, FLORIDA.

IN PART OF SECTION 16, TOWNSHIP 44 SOUTH, RANGE 41 EAST
PALM BEACH COUNTY, FLORIDA
IN TWO SHEETS SHEET NO. 2

GEE & JENSON
ENGINEERS - ARCHITECTS - PLANNERS, INC.
WEST PALM BEACH, FLORIDA
NOVEMBER 1985

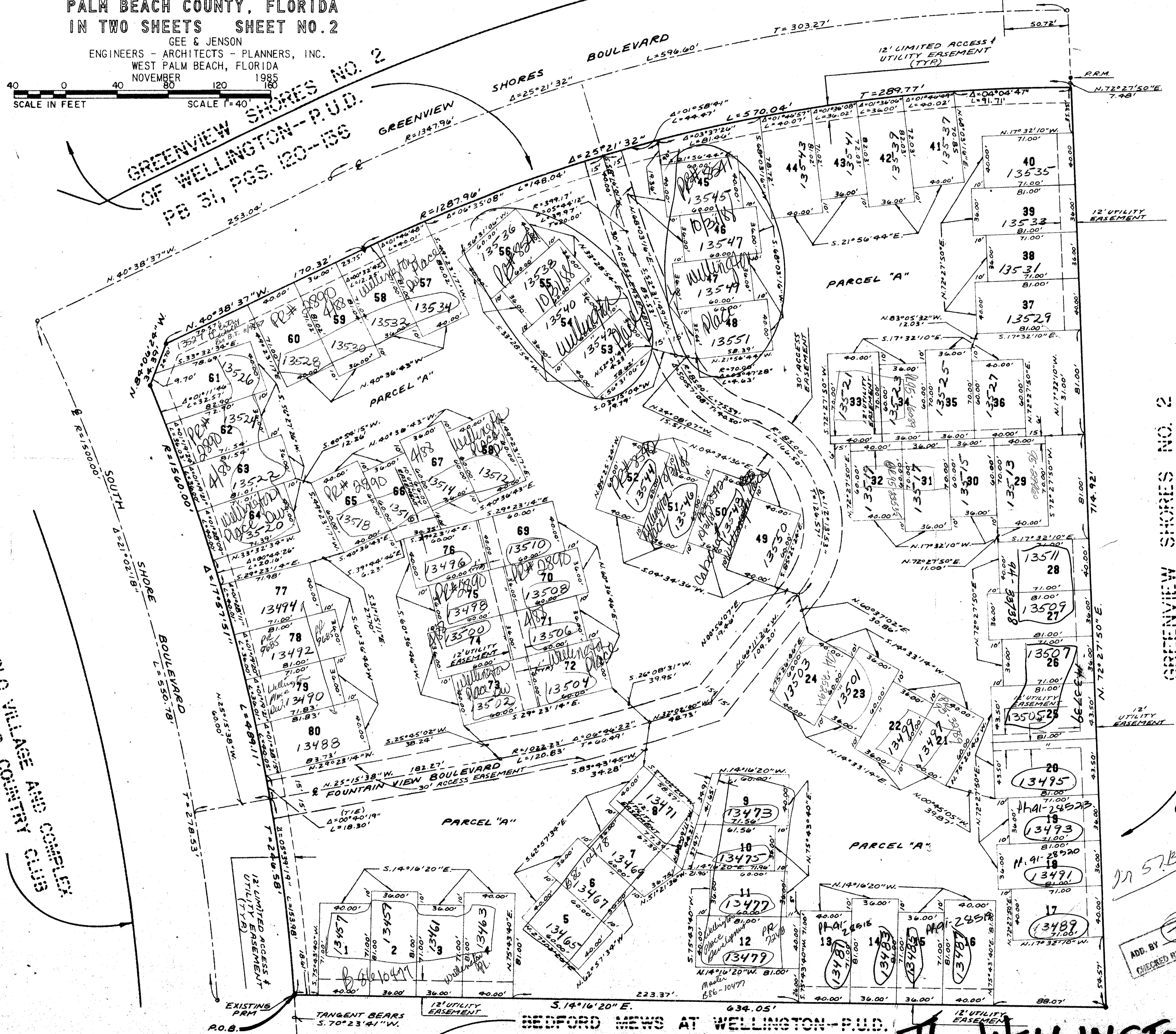
SCALE IN FEET SCALE 1"=40'

GREENVIEW SHORES NO. 2
OF WELLINGTON--P.U.D.
PB 31, PGS. 120-136

EQUESTRIAN/POLO VILLAGE AND COMPLEX
OF PALM BEACH COUNTY P.U.D.
PB. 35, PGS. 157 & 158

STATE OF FLORIDA
COUNTY OF PALM BEACH
This plat was filed for
record at _____ M. this _____ day
of _____ 1986, and duly
recorded in Plat Book No. _____
on Pages _____ thru _____
JOHN B. DUNKLE
Clerk Circuit Court
By: _____ D.C.

150



GREENVIEW SHORES NO. 2
OF WELLINGTON--P.U.D.
ABANDONED PER OR.B. 5325, PGS. 61-615

0332-357

53/150

ADD. BY [Signature]
CHECKED BY [Signature]

REDFORD MEWS AT WELLINGTON--P.U.D.
PB. 42, PGS. 25-27

THE WELLINGTON PLACE

DRAWING NUMBER
PLAN HOLD CORPORATION - IRVINE, CALIFORNIA
REORDER BY NUMBER 07345

DRAWING NUMBER
PLAN HOLD CORPORATION - IRVINE, CALIFORNIA
REORDER BY NUMBER 07345

DRAWING NUMBER
PLAN HOLD CORPORATION - IRVINE, CALIFORNIA
REORDER BY NUMBER 07345